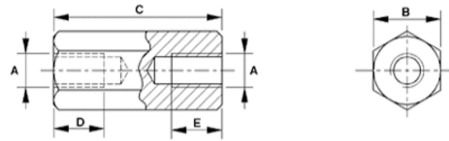


# Female/Female



FF



FF

## Lengths

5-8-10-12-15-18-20-25-30-35-40-45-50-55-60-70-80

## Material Code

B = brass nickel plated

S = mild steel zinc plated

SS = stainless steel

## How to order

Type + Thread + Outer Dia. + Length + Material Code

Example: FF-M3-50-8-B or FF-M4-70-6-SS

A Thread	B Outer Dia. mm	C Length mm		D / E Inside Thread mm		Please note!
		Min.	Max	D	E	
M2	4.0	5	20	Through	Through	Can be customized
M2	4.0	25	45	8	8	Can be customized
M2.5	5.0	5	20	Through	Through	Can be customized
M2.5	5.0	25	45	10	10	Can be customized
M3	5.0	5	20	Through	Through	Can be customized
M3	5.0	25	80	10	10	Can be customized
M3	5.5	5	20	Through	Through	Can be customized
M3	5.5	25	80	10	10	Can be customized
M4	7.0	5	20	Through	Through	Can be customized
M4	7.0	25	80	10	10	Can be customized
M5	8.0	5	20	Through	Through	Can be customized
M5	8.0	25	80	10	10	Can be customized
M6	10.0	10	25	Through	Through	Can be customized
M6	10.0	30	80	13	13	Can be customized
M8	13.0	15	30	Through	Through	Can be customized
M8	13,0	35	80	15	15	Can be customized

