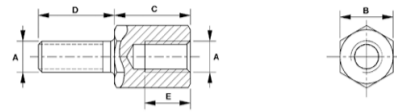


# Male/Female



MF



MF

## Lengths

5-8-10-12-15-18-20-25-30-35-40-45-50-55-60-70-80

## Material Code

B = brass nickel plated

S = mild steel zinc plated

SS = stainless steel

## How to order

Type + Thread + Outer Dia. + Length + Material Code

Example: MF-M4-70-15-B or MF-M3-55-10D6-SS (customized D length=6mm)

A Thread	B Outer Dia. mm	C Length mm		D / E Outside / Inside Thread mm		Please note!
		Min.	Max	D	E	
M2	4.0	5	5	6	3	Can be customized
M2	4.0	8	8	6	4	Can be customized
M2	4.0	10	10	6	6	Can be customized
M2	4.0	12	40	6	8	Can be customized
M2.5	5.0	5	5	6	3	Can be customized
M2.5	5.0	8	8	6	4	Can be customized
M2.5	5.0	10	10	6	6	Can be customized
M2.5	5.0	12	40	6	8	Can be customized
M3	5.0	5	5	8	3	Can be customized
M3	5.0	5	8	8	4	Can be customized
M3	5.0	10	10	8	6	Can be customized
M3	5.0	12	20	8	8	Can be customized
M3	5.0	25	80	10	10	Can be customized
M3	5.5	5	5	8	3	Can be customized
M3	5.5	8	8	8	4	Can be customized
M3	5.5	10	10	8	6	Can be customized
M3	5.5	12	20	8	8	Can be customized
M3	5.5	25	80	10	10	Can be customized
M4	7.0	5	5	8	2,5	Can be customized
M4	7.0	8	8	8	4	Can be customized
M4	7.0	10	10	8	6	Can be customized
M4	7.0	12	20	8	8	Can be customized

M4	7.0	25	80	10	10	Can be customized
M5	8.0	5	5	8	2,5	Can be customized
M5	8.0	5	8	8	4	Can be customized
M5	8.0	8	10	8	6	Can be customized
M5	8.0	12	20	8	8	Can be customized
M5	8.0	25	80	10	10	Can be customized
M6	10.0	10	10	8	6	Can be customized
M6	10.0	12	15	8	8	Can be customized
M6	10.0	18	20	8	10	Can be customized
M6	10.0	25	80	10	10	Can be customized
M8	13.0	15	15	14	8	Can be customized
M8	13.0	18	20	14	12	Can be customized
M8	13.0	25	80	14	15	Can be customized