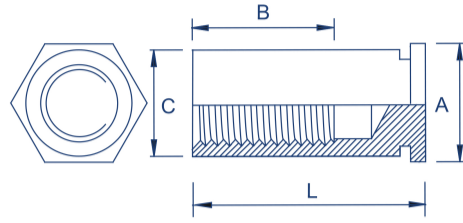
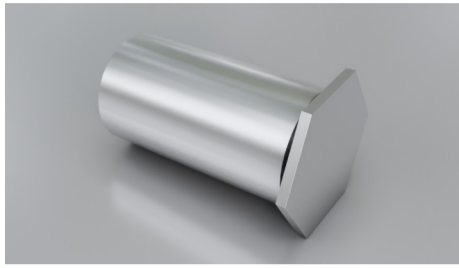


Blind



Type: SF-BSO or SF-BSOS or SF-BSO4 or SF-BSO/SF-BSOS/SF-BSO4/SF-BSOA
SF-BSOA

Lengths

5/6/7/8/9/10/12/14/16/18/20/22/30

Material Code

Steel/zinc = SF-BSO

Stainless steel = SF-BSOS

Grade400 stainless steel = SF-BSO4

Aluminium = SF-BSOA

How to order

Type + Thread + Length

Example: SF-BSO-M4-10 or SF-BSOS-M5-10

Thread	A nom. mm	C -0.13 mm	L +0.05/-0.13 mm	Sheet Thickness min. mm	Rec. Hole Size +0.08 mm	Distance Centre Hole to Sheet Edge min. mm	Please note!							
M2.5	4.80	4.20	6-16	1.0	4.22	6.0	No L=5/7/9							
M3	4.80	4.20	5-25	1.0	4.22	6.0								
3.5M3	5.39	6.40	5-25	1.0	5.41	6.8								
M4	7.90	7.12	6-25	1.27	7.14	8.0	No L=7							
M5	7.90	7.12	6-25	1.27	7.14	8.0	No L=7/9							
Length +0.05/-0.13	5	6	7	8	9	10	12	14	15	16	18	20	22	25
B min. mm	2.8	3.2	3.6	4.0	4.0	4.0	5.0	6.5	6.5	6.5	9.5	9.5	9.5	9.5

