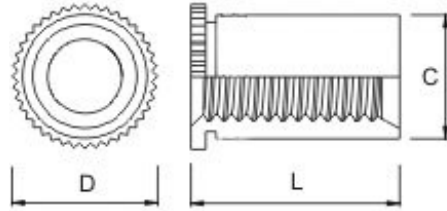
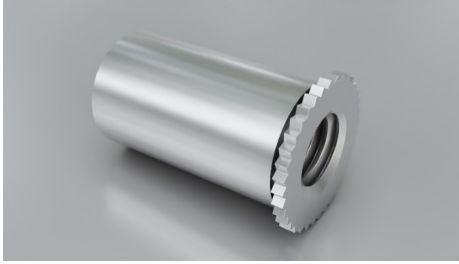


Close to Edge



Type: SF-DSO or SF-DSOS

SF-DSO/SF-DSOS

Material Code

Steel/zinc = SF-DSO

Stainless steel = SF-DSOS

How to order

Type + Thread + Length

Example: SF-DSO-M3-7 or SF-DSOS-M3-7

Thread	C max. mm	D nom. mm	L +0.05/-0.13 mm	Sheet Thickness mm	Rec. Hole Size +0.08 mm	Distance Centre Hole to Sheet Edge min. mm	Please note!
M3	4.2	4.92	7.0	0.94 - 6.35	4.2	3.2	

