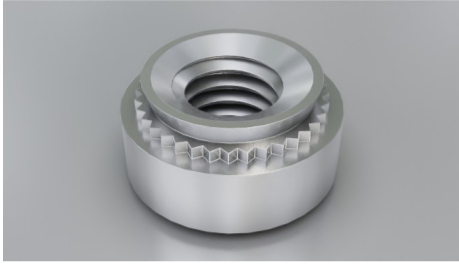
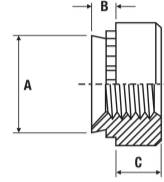
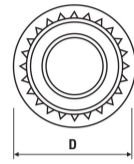


# Non-Locking H-Nut



Type: SF-H



SF-H

## Material Code

Steel/zinc = SF-H

## How to order

Type + Thread

Example: SF-H-M10

Thread	A mm	B mm	C mm	D mm	Sheet Thickness min. mm	Rec. Hole Size +0.08 mm	Distance Centre Hole to Sheet Edge min. mm	Please note!
M10	12.67	1.48	7.9	16.5	1.48	12.70 - 12.83	12.00	

