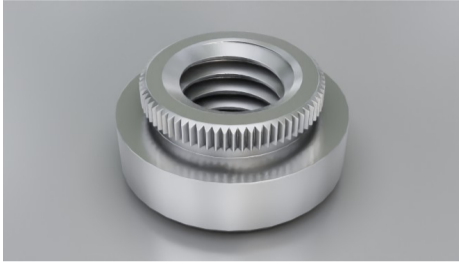
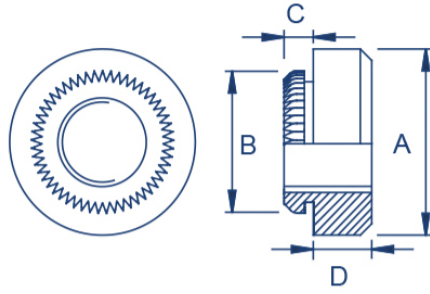


Broaching



Type: SF-KF2 or SF-KFS2



SF-KF2/SF-KFS2

Material Code

Steel/zinc = SF-KF2

Stainless steel = SF-KFS2

How to order

Type + Thread + Sheet Code

Example: SF-KF2-M3-0 or SF-KFS2-M4-0

Thread	A ±0.13 mm	B ±0.08 mm	C max. mm	D ±0.13 mm	Sheet Code	Sheet Thickness min. mm	Rec. Hole Size +0.08 mm	Distance Centre Hole to Sheet Edge min. mm	Please note!
M2	5.56	4.19	1.53	1.5	0	1.53	3.73	4.2	
M2.5	5.56	4.68	1.53	1.5	0	1.53	4.22	4.4	
M3	5.56	4.68	1.53	1.5	0	1.53	4.22	4.4	
M3.5	7.00	5.88	1.53	1.6	0	1.53	5.50	5.5	
M4	8.74	6.86	1.53	2.0	0	1.53	6.40	6.4	
M5	9.53	7.37	1.53	3.0	0	1.53	6.90	7.1	

