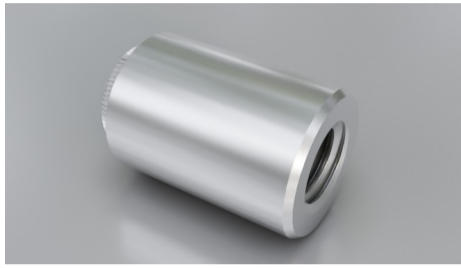


# Broaching Threaded



Type: SF-KFE or SF-KFSE

## Lengths

3/4/5/6/8/10/12/14

## Material Code

Steel/zinc = SF-KFE

Stainless steel = SF-KFSE

## How to order

Type + Thread + Length

Example: SF-KFE-M4-10 or SF-KFSE-M3-6

Thread	A ±0.13 mm	B ±0.08 mm	C max. mm	L ±0.13 mm	Sheet Thickness min. mm	Rec. Hole Size +0.08 mm	Distance Centre Hole to Sheet Edge min. mm	Please note!
M3	5.56	4.68	1.53	3/4/5/6/8/10/12/14	1.53	4.22	4.4	Stainless L= 4/6/8/10
M4	8.74	6.75	1.53	4/10	1.53	6.4	6.4	Only KFE

