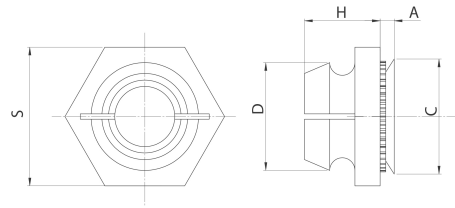
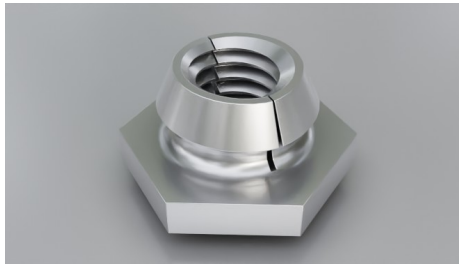


# Locking



Type: SF-LK or SF-LKS

SF-LK/SF-LKS

## Material Code

Steel/zinc = SF-LK

Stainless steel = SF-LKS

## How to order

Type + Thread + Sheet Code

Example: SF-LK-M3-1 or SF-LKS-M4-2

Thread	A max. mm	C max. mm	D max. mm	H ±0.25 mm	S Nom. mm	Sheet Code	Sheet Thickness min. mm	Rec. Hole Size +0.08 mm	Distance Centre Hole to Sheet Edge min. mm	Please note!
M2.5	0.97	4.35	4.45	3.43	6.35	1	1.0	4.37	3.90	Only SF-LKS
	1.38					2	1.4			Only SF-LKS
M3	0.97	4.73	4.85	3.43	6.35	1	1.0	4.75	4.00	
	1.38					2	1.4			Only SF-LKS
M4	0.97	6.73	6.20	4.45	8.73	1	1.0	6.76	5.20	
	1.38					2	1.4			
M5	0.97	7.90	7.40	5.21	9.53	1	1.0	7.92	5.60	Only SF-LKS
	1.38					2	1.4			Only SF-LKS

