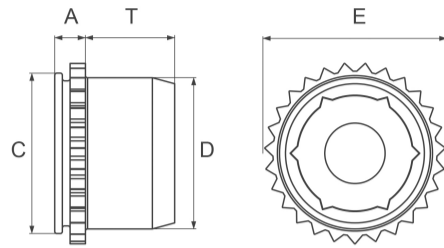
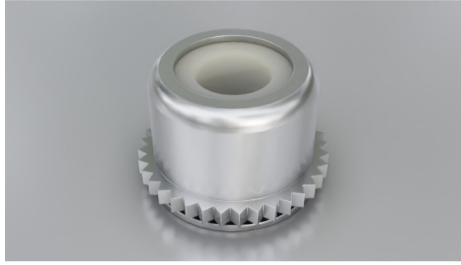


Nylon Lock



Type: SF-PL or SF-PLC

SF-PL/SF-PLC

Material Code

Steel/zinc = SF-PL

Stainless steel = SF-PLC

How to order

Type + Thread

Example: SF-PL-M3 or SF-PLC-M4

Thread	A max. mm	C max. mm	D max. mm	E max. mm	T max. mm	Sheet Thickness min. mm	Rec. Hole Size +0.08 mm	Distance Centre Hole to Sheet Edge min. mm	Hole in attached Parts max. mm	Please note!
M3	1.53	5.98	5.52	7.01	3.56	1.0 - 1.78	6.0	4.32	3.5	
M4	1.53	7.48	7.01	8.54	4.20	1.0 - 1.78	7.5	5.59	4.5	
M5	1.53	7.98	7.52	9.0	4.45	1.0 - 1.78	8.0	6.35	5.5	

