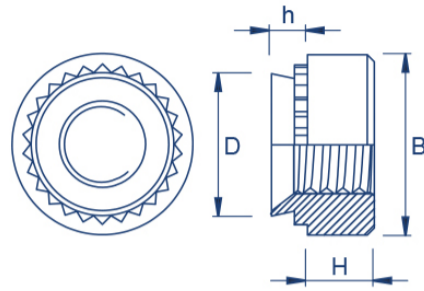
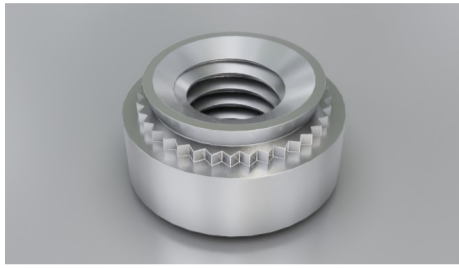


Standard



Type: SF-S or SF-CLS or SF-SP4 or SF-SP2 SF-S/SF-CLS/SF-SP4/SF-SP2/SF-CLA
or SF-CLA

Material Code

Steel/zinc = SF-S

Stainless steel = SF-CLS

Grade400 stainless steel = SF-SP4

A286 stainless steel = SF-SP2

Aluminium = SF-CLA

How to order

Type + Thread - Sheet Code

Example: SF-S-M3-2 or SF-CLS-M4-1 or SF-SP4-M6-2

Thread	B ± 0.2 mm	D max. mm	h max. mm	H ± 0.25 mm	Sheet Code	Sheet Thickness min. mm	Rec. Hole Size +0.08 mm	Distance Centre Hole to Sheet Edge min. mm	Please note!
M2	6.35	4.20	0.77	1.5	0	0.8	4.22	4.8	
			0.97		1	1.0			
			1.38		2	1.4			
M2.5	6.35	4.20	0.77	1.5	0	0.8	4.22	4.8	
			0.97		1	1.0			
			1.38		2	1.4			
M3	6.35	4.20	0.77	1.5	0	0.8	4.22	4.8	
			0.97		1	1.0			
			1.38		2	1.4			
3.5M3	7.1	4.73	0.77	1.5	0	0.8	4.75	5.6	
			0.97		1	1.0			
			1.38		2	1.4			
M4	7.95	5.38	0.77	2.0	0	0.8	5.41	6.9	
			0.97		1	1.0			
			1.38		2	1.4			
			2.21		3	2.3			
M5	8.75	6.33	0.77	2.0	0	0.8	6.35	7.1	
			0.97		1	1.0			
			1.28		2	1.4			
			2.21		3	2.3			
M6	11.10	8.73	0.89	4.08	00	0.92	8.75	8.6	
			1.15		0	1.2			

			1.38		1	1.4			
			2.21		2	2.3			
			3.05		3	3.2			
M8	12.65	10.47	1.38	5.47	1	1.4	10.5	9.7	
			2.21		2	2.3			
			3.05		3	3.2			
M10	17.35	13.97	2.21	7.48	1	2.3	14.0	13.5	
			3.05		2	3.2			
M12	20.55	16.95	3.05	8.5	1	3.2	17.0	16.0	