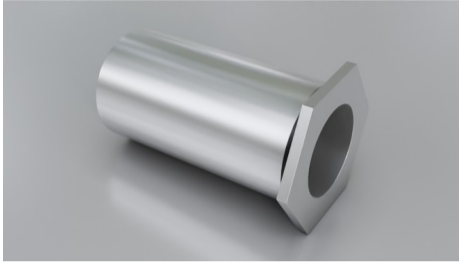
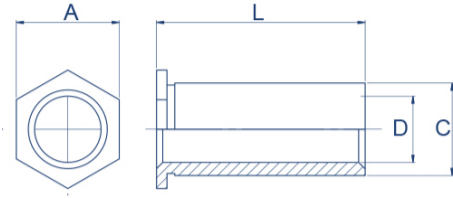


Clear Hole



Type: SF-SO or SF-SOS



SF-SO/SF-SOS

Lengths

3/4/5/6/8/10/12/14/16/18/20/22

Material Code

Steel/zinc = SF-SO

Stainless steel = SF-SOS

How to order

Type + Dia. Code + Length

Example: SF-SO-43.1-8 or SF-SOS-84.1-8

Dia. Code	A nom. mm	C -0.13 mm	D Counter-bore -0.13 mm	L +0.05/-0.13 mm	Sheet Thickness min. mm	Rec. Hole Size +0.08 mm	Distance Centre Hole to Sheet Edge min. mm	Please note!
43.1	4.8	4.2	3.1	3/4/8/10/12	1.00	4.22	6.0	
63.1	6.4	5.39	3.1	4/5/6/8/10/12/14/16	1.00	5.41	6.8	
63.6	6.4	5.39	3.6	4/5/6/8/10/12/14/18	1.00	5.41	6.8	
84.1	7.9	7.12	4.1	3/4/6/8/10/12/14/18	1.27	7.14	8.0	
85.1	7.9	7.12	5.1	3/4/6/8/10/12/14/22	1.27	7.14	8.0	

