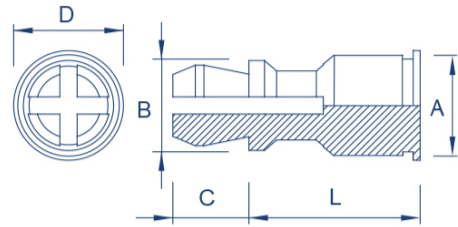


Clip-on



Type: SF-SSS or SF-SSC or SF-SSA

SF-SSS/SF-SSC/SF-SSA

Lengths

8/10/12/14/16/18/20/22/25

Material Code

Steel/zinc = SF-SSS

Stainless steel = SF-SSC

Aluminium = SF-SSA

How to order

Type + Mounting Hole Dia. + Length

Example: SF-SSS-4-8 or SF-SSC-4-12

Top Panel Mounting Hole Dia. mm	A max. mm	B ± 0.13 mm	C ± 0.13 mm	D ± 0.13 mm	L ± 0.13 mm	Rec. Hole Size +0.08 mm	Please note!		
4mm	5.39	4.78	3.58	6.35	8-25	5.4			
Panel 1 - Metal HRB50					Panel 2 - PCB or Metal				
Type	Bottom Mounting Hole +0.08 mm	Hardness max.	Thickness min. mm	Distance Centre Hole to Sheet Edge min. mm	Location Tolerance max. mm	Top Mounting Hole +0.08 mm	Hardness max.	Thickness Range mm	Distance Centre Hole to Sheet Edge min. mm
SF.SSS	5.41	HRB 60	1.0	6.6	± 0.13	4.0	No limit	1-1.8	2.54
Sf-SSC	5.41	HRB 70	1.0	6.6	± 0.13	4.0	No limit	1-1.8	2.54
SF-SSA	5.41	HRB 50	1.0	6.6	± 0.13	4.0	No limit	1-1.8	2.54

